

# D C Norris & Company

At the forefront of food handling and process technology

## DCN Datastream

DCN DataStream software has been designed to allow customers to log information relating to temperature changes in any cooking/cooling process.

- Data stream in real-time
- Relational database
- Date
- Time (start, finish, total)
- Batch number numerical
- Operator ID
- Product ID
- Printed report
- Typical applications include:
  - Cooking kettles
  - Cooling systems
  - Cook quench chill systems
  - CIP systems



- Data logging can be seen running in real-time
- Customised data written to the database
- Data can be reviewed graphically
- Reports generated and printed against selected database records

**DCN On-Site Test Kitchen Facility Available for Product Development, Trials & Hire**

**Book Your Trial Now!**



**For further details and for the full range of DCN food processing equipment contact:**

Sales Office, D C Norris & Company Ltd,

Tel: +44 (0)1767 677 515 Fax: +44 (0) 1767 677956

Email: [sales@dcnorris.co.uk](mailto:sales@dcnorris.co.uk)

Or visit our web-site [www.dcnorris.co.uk](http://www.dcnorris.co.uk)

# D C Norris & Company

At the forefront of food handling and process technology

## Technical Data

The DCN DataStream 2000 system has been designed to retrieve and log analogue and digital data relating to production cycles performed on any D C Norris manufactured machinery. Typically it will log the temperatures and weight of a product during a cook cycle, cooling temperatures and the batching of products such as water or milk in to a vessel via flow meters.

DCN DataStream 2000 system utilises a Microsoft SQL Server database to store cycle records and, by using the

**Historian** utility, the records can be viewed and analysed and hard copy reports can be generated and printed off.

### Features: DCN DataStream 2000

- The data can be visualised in real-time on an easy to use time based graph and also in a table format depicting a date/time stamp and the actual data.
- Parameters relating to the cook cycle are instantly displayed at the start of the cycle, e.g. channel name, batch number, product, operator.

### Features: Historian

- Records can be selected relating to the year, month, day or all records.
- Records can be selected relating to the batch number, product and/or operator.
- Records can be selected from a table and visualised in table format or on a graph.

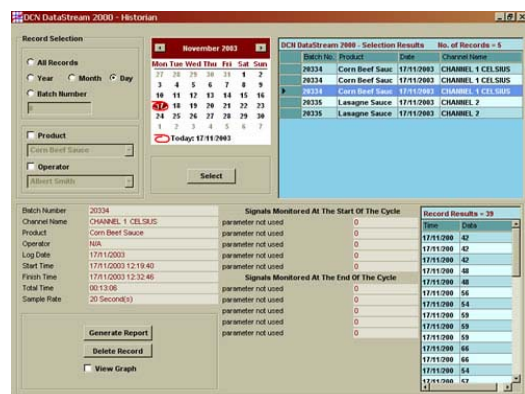
The system is supplied with a stand alone PC:

### PLC

- The system uses Mitsubishi Q server configuration

### HMI

- Currently the system is available using E1101 or E1071 series HMI's



**DCN On-Site Test Kitchen Facility Available for Product Development, Trials & Hire**

**Book Your Trial Now!**



**For further details and for the full range of DCN food processing equipment contact:**

Sales Office, D C Norris & Company Ltd,

Tel: +44 (0)1767 677 515 Fax: +44 (0) 1767 677956

Email: sales@dcnorris.co.uk

Or visit our web-site [www.dcnorris.co.uk](http://www.dcnorris.co.uk)